

SHROPSHIRE MUSIC



90 · 91

THE DIARY

5 Oct	7.30pm	WALTER KLIEN	The Music Hall
13 Oct	7.30pm	ALVAREZ AND DEARDEN	Ashton Theatre
20 Oct	7.30pm	HILLIARD ENSEMBLE	St Marys Church
14 Nov	8.00pm	A MAN WOMAN AND A DOUBLE BASS	The Buttermarket
27 Nov	6.00pm	THE RING: PART I	Telford International Raquet Centre
29 Nov	6.00pm	THE RING: PART II	Telford International Raquet Centre
11 Dec	8.00pm	MADDY PRIOR AND RICK KEMP	The Buttermarket
19 Jan	7.30pm	BRITANNIA BUIDING SOCIETY BAND	St Marys Church
10 Feb	3.00pm	LONDON FORTEPIANO TRIO	The Lion
12 Feb	1.00pm	LUNCH: CLARSACH	Bear Steps
28 Feb	8.00pm	CAPRICORN	The Lion
6 Mar	7.30pm	ALLEGRI STRING QUARTET BEETHOVEN I	The Lion
13 Mar	7.30pm	OPERA RESTOR'D	Oakengates Town Hall
19 Mar	7.00pm	CANNON HILL PUPPETS	The Music Hall
20 Mar	7.30pm	JACQUES LOUSSIER	The Buttermarket
3 Apr	7.30pm	ALLEGRI STRING QUARTET BEETHOVEN II	The Lion
9 Apr	7.30pm	NORTHERN CHAMBER ORCHESTRA SOLOIST: OSIAN ELLIS	St Marys Church
19 Apr	1.00pm	LUNCH: PERCUSSION	St Marys Church
24 Apr	7.30pm	ALLEGRI STRING QUARTET BEETHOVEN III	The Lion
8 May	7.30pm	ALLEGRI STRING QUARTET BEETHOVEN IV	The Lion
25 May	7.30pm	ALBERNI STRING QUARTET	St Marys Church
29 May	7.30pm	ALLEGRI STRING QUARTET BEETHOVEN V	The Lion
12 June	7.30pm	ALLEGRI STRING QUARTET BEETHOVEN VI	The Lion

WALTER KLIEN

THE MUSIC HALL

Friday 5 October, 7.30 p.m.

MOZART
Sonata in B flat K333
BRAHMS
Fantasies Op 116
SCHUBERT
Sonata in A D959

Walter Klien is one of the world's most distinguished pianists, especially acclaimed for his performances and recordings of Mozart and the Romantic composers. Winner of many international prizes, he is a frequent soloist with the world's major orchestras, and as a chamber music player he worked regularly with the Amadeus Quartet both on disc and in the concert hall.

Submitted for a Government Award under the Business Sponsorship Incentive Scheme



MOZART BICENTENARY



JAVIER ALVAREZ and IAN DEARDEN

**ASHTON THEATRE
(Shrewsbury School)**

Saturday 13 October, 7.30 p.m.

Both these artists are prominent figures on the international electro-acoustic scene as composers, researchers and teachers, including at the Royal College of Music. They are winners of numerous awards including the Mendelssohn Prize and Vaughan Williams Award. Ian is Project Co-ordinator for the National Studio for Electronic Music, and Javier is Head Producer for the National Sonic Arts Workshop.

They work regularly with composers such as Harrison Birtwhistle, Karlheinz Stockhausen and Steve Reich.

This exciting programme combines live instruments with synthesisers and tape, and will include a new work by local groups composed during the artists' three-day residency.

SEE WORKSHOPS



THE HILLIARD ENSEMBLE

Songs of Love from the Middle Ages to the Present-day

ST MARY'S CHURCH

Saturday 20 October, 7.30 p.m.

The subject of love has inspired many composers' best music, both serious and less so.

The Hilliards follow their first highly successful visit to Shrewsbury with another programme which imaginatively juxtaposes the old and the new - often creating surprising and illuminating insights.

They remain unchallenged as the world's finest and most recorded vocal ensemble of both early and present-day music.

"Unrivalled and altogether inspiring"
Sunday Times



SEE WORKSHOPS



A MAN A WOMAN AND A DOUBLE BASS

Lowri Blake - voice and cello Peter Buckoke - double bass

THE BUTTERMARKET

Wednesday 14 November, 8.00 p.m.

This unique and entertaining duo bring an infectious blend of wit and humour to their shows in which they effortlessly perform cabaret alongside classical, pop and jazz.

They broadcast for Radio 2, 3 and 4 and are at home either as guests of the Cambridge Buskers or of the BBC Philharmonic, in a pub or on the South Bank.

Their show for Shrewsbury includes the complete Valkyrie in six minutes and Bizet's Carmen in five minutes, instrumental duos from Rossini and Paganini, and songs such as 'Love Potion No 9', Tom Lehrer's 'I got it from Agnes' and favourites by Gershwin and Cole Porter.



City of Birmingham Touring Opera

THE RING CYCLE

WAGNER

TELFORD INTERNATIONAL RACQUET CENTRE

Part I

Tuesday 27 November 6.00 p.m.

Submitted for a Government Award under the Business Sponsorship Incentive Scheme

EPSON
Epson Telford Limited

Part II

Thursday 29 November 6.00 p.m.

Sponsorship under negotiation

Wagner's great visionary masterpiece is the mightiest work in the operatic repertoire. It grapples with the mystery of the cosmos and human condition through the great poetic and religious myths.

City of Birmingham Touring Opera is the most exciting and innovative opera company of our time who for three years has played to packed houses in London and throughout the country. It has received outstanding national and international acclaim.

This bold enterprise with a cast of leading singers and top professional orchestra, will be staged at the South Bank and only a few other selected venues including Telford.

The Director is CBTO's internationally acclaimed artistic director Graham Vick, whose recent debut at the Royal Opera House was hailed as the triumphant start of a new era at Covent Garden.

Includes Supper Interval
Book Supper Tickets, or bring your own.
Licensed Bar
EARLY BOOKING IS STRONGLY ADVISED

• A Ring Cycle Introductory Evening with members of the production team is being arranged by the Friends. Details with your tickets.

See Box Offices

Tickets also available from:
TELFORD INFORMATION CENTRE
Town/Shopping Centre
Tel: Telford 291370
OAKENGATES TOWN HALL (& AGENCIES)
Limes Walk
Tel: Telford 619020

• Coaches will be arranged from Shrewsbury and other areas if demand merits. See Booking Form.

• The Racquet Centre is in Telford Town Centre, easily approached from either Junction 4 or Junction 5/M54. Directions will be sent with your tickets.

Supported by
Telford Development Corporation
Shropshire County Council
Wrekin District Council

MADDY PRIOR & RICK KEMP

THE BUTTERMARKE

Tuesday 11 December, 8.00 p.m.

A rare treat! - The leading lady of English traditional music with her husband and top world bass player.

Both are founder members of Steeleye Span and 'giants' of their musical scene. Together they perform a pot pourri of material which includes their own works, traditional material and even old 'pop' standards. Their brilliant musical juggling and relaxed introductions create an evening of total pleasure, with an eye to the festive season.



WACE MORGAN
SOLICITORS

BRITANNIA BUILDING SOCIETY BAND ('FODEN')

ST. MARY'S CHURCH

Saturday 19 January, 7.30 p.m.

A rare visit of the BBC Band of the Year 1990 - sixty five times prizewinner at the British Open and the National Championships and among the world's elite.

Under the baton of Howard Snell they present a brilliant night's entertainment including a number of original works for brass band.



Royal Mail

BOOKING INFORMATION

BOX OFFICES

SHREWSBURY
THE MUSIC HALL,
THE SQUARE
SHREWSBURY TEL: 50763
(Postal booking from the
Music Hall only)

• LUDLOW
XX Century Books,
132 Corve Street
Tel: Ludlow 4441

• WELSHPOOL
Travelmaster,
3 Severn Street
Tel: Welshpool 554500

• BRIDGNORTH
Book Services,
Waterloo Terrace
Tel: Bridgnorth 765911

• OSWESTRY
Don Everall Transglobe
Leg Street
Tel: Oswestry 654114

• TELFORD
Telford Musical Instruments
7 Bell Street Wellington
Tel: Telford 255310
Plus other Telford Box Offices
for 'The Ring' - see diary

SAVER TICKET OFFERS

(by post from The Music Hall only)

SEASON SAVER - 11 concerts £40
RING CYCLE - 2 nights £18
ALLEGRI CYCLE - 6 concerts £25
SEASON plus ALLEGRI - only £65

SEATING

At The Music Hall, all seats will be numbered.

In all other venues the seats will not be individually numbered, but areas will be reserved for Saver Ticket holders.

STANDBY DISCOUNT TICKETS - may be purchased on the door for students and children. Subject to availability.

BOOKING

PRIORITY (by post): 22 August

Friends & Covenantors

Saver Tickets

Multiple bookings

(n.b. minimum of 10 Tickets)

Please allow for processing time.

N.B. Tickets will be sent in mid-September.

GENERAL : 4 September

TRAVEL SUBSIDY Shropshire County Council will help with the cost of groups travelling to any of these events.

Contact - prior to your visit:

County Arts Officer

Tel: Shrewsbury (0743) 232093.

The Shropshire Music Trust is supported by

SHREWSBURY & ATCHAM BOROUGH

COUNCIL

SHROPSHIRE COUNTY COUNCIL

MICHAEL TIPPETT FOUNDATION

MUSICIANS' UNION

PERFORMING RIGHT SOCIETY



VENUE DETAILS

• MUSIC HALL

The Square, Shrewsbury
Tel: (0743) 50761/2/3/4

• BUTTERMARKET

Howard Street, Shrewsbury
Tel: (0743) 241455/6

• ST.MARY'S CHURCH

St. Mary's Church, Shrewsbury

• THE LION

Wyle Cop, Shrewsbury,
Tel: (0743) 53107

• ASHTON THEATRE

Shrewsbury School, Ashton Road,
Shrewsbury

• TELFORD RACQUET CENTRE

St. Quentin Gate, Town Centre, Telford
Tel: (0952) 291919

DISABLED

All venues are suitable for the disabled, but please contact the hall prior to your visit so that any special arrangements can be made.

Assistance is also gratefully acknowledged from:

Bentley & Co. - Chartered Building Surveyors

Roger T. Hulme Corporate & Personal

Financial Planning

Charles Clark Group Ltd

Budgen Motors Ltd - Peugeot, Shrewsbury

Shropshire Music Trust

Registered Charity No. 515026

SHROPSHIRE MUSIC BOOKING FORM

Group Reduction: 10 tickets for the price of 8 (special extra reductions on request).

SAVER OFFERS		Price	No	Total £
*	Season Saver	£40		
•	Ring Cycle (Both parts) plus: Supper ticket each evening	£12 £18		
^	Allegri Cycle (6 concerts)	£30		
	Season plus Allegri	£65		
DATE	EVENT			
*	5 Oct Walter Klien	£ 7.00		
*	13 Oct Alvarez/Dearden	£ 5.00		
	Student	£ 3.00		
*	20 Oct Hilliard Ensemble	£ 6.00		
*	14 Nov Man Woman Double Bass	£ 5.00		
•	27 Nov The Ring: Part I	£12.00		
	+ Supper	£ 6.00		
•	29 Nov The Ring: Part II	£12.00		
	+ Supper	£ 6.00		
*	11 Dec Maddy Prior/Rick Kemp	£ 5.00		
*	19 Jan Britannia Building Society Band	£ 6.00		
*	10 Feb London Fortepiano Trio	£ 6.00		
	12 Feb Lunch: clarsach	£ 3.00		
*	28 Feb Capricorn	£ 6.00		
^	6 Mar Allegri SQ/Beethoven I	£ 7.00		
	13 Mar Opera Restor'd (See Diary)	£ 6.50		
	Student/child	£ 3.50		
	19 Mar Cannon Hill Puppets	£ 3.00		
	Child	£ 1.50		
*	20 Mar Jacques Loussier	£ 8.00		
	Gallery	£7.00		
^	3 Apr Allegri SQ/Beethoven II	£ 7.00		
*	9 Apr NCO/ Osian Ellis	£ 7.00		
	19 Apr Lunch: percussion	£ 3.00		
^	24 Apr Allegri SQ/Beethoven III	£ 7.00		
^	8 May Allegri SQ/Beethoven IV	£ 7.00		
*	25 May Alberni SQ	£ 7.00		
	Child	£ 1.50		
^	29 May Allegri SQ/Beethoven V	£ 7.00		
^	12 June Allegri SQ/Beethoven VI	£ 7.00		
TOTAL				

I am a COVENANTOR/FRIEND Please send details

I am interested in COACHES to 'The Ring'

I enclose my remittance made payable to SAB Council

NAME _____

(BLOCK CAPITALS PLEASE)

ADDRESS _____

Postcode _____

Tel: _____

Send to: BOX OFFICE, THE MUSIC HALL, THE SQUARE, SHREWSBURY SY1 1LH
Tel: (0743) 50761/2/3/4

LONDON FORTEPIANO TRIO

THE LION

Sunday 10 February, 3.00 p.m.

Linda Nicholson fortepiano, Elizabeth Wallfisch violin, Timothy Mason cello

MOZART BICENTENARY

MOZART

Piano Trio in B flat K502
Piano Trio in G K496
Piano Trio in E K542
Fantasy in C minor K396
Little Gigue K574

The London Fortepiano Trio are Britain's leading specialists in the piano trios of the Classical era, playing and recording throughout Europe.

Amidst the many celebrations of 1991 they are ideally suited to provide a stunning performance of Mozart's work for piano trio, which the ensemble has recorded for Hyperion.

Pre-performance talk: 2.15 p.m.

THE EARLY MUSIC NETWORK



LUNCHTIME: MARY ANN KENNEDY clarsach

Yebudi Menuhin's Live Music Now! Scheme

BEAR STEPS

Tuesday 12 February,
1.00 - 2.00 p.m.

Twice winner of the International Celtic Harp Competition, Mary Ann plays and sings largely traditional Gaelic & Scots music on this beautiful and little heard Scottish harp.

Coffee available



MARY ANN KENNEDY

The Whitchurch Series at Sir John Talbot School

7.30p.m.

Saturday 13 October

JOHN GOUGH and SALLY ANN BOTTOMLEY

Piano Duets

Sally Ann and John are a piano duo with a difference - they make their recitals a musical entertainment for the audience with a wide repertoire ranging from the serious to the not so serious. They are two of Britain's outstanding younger pianists, who work regularly with the BBC and the major orchestras and recording companies.

Part of the Shropshire Education Festival.

Tuesday 29 January

KALENGO PERCUSSION ENSEMBLE

The group takes its name from the African word for talking drum - Kalengo - reflecting its ability to communicate through the fascinating world of percussion. They are part of the Royal Liverpool Philharmonic's education and workshop programme, and as individual soloists play with most of the major national orchestras.

One member - Andrew Whettam presents a Lunchtime Concert at St. Mary's on April 19 - see Diary.
Also: Daytime Children's Workshop
11 - 13 yrs.

Thursday 23 May

A FAMILY CONCERT

ALBERNI STRING QUARTET

A lively and informal introduction to chamber music and the String Quartet for those both with some and with no experience of live music making.

Part of the Alberni Residency - including a Public Concert at St. Mary's on May 25 - see Diary.
Also: Daytime Children's Workshop
8 - 11 yrs.

Further details from: Jane Bebbington, Dearnford Hall, Whitchurch.
Tel: Whitchurch 2319.



ALVAREZ AND DEARDEN



OPERA REST



CAPRICORN

SAVER OFFERS
* Save over 33% of the price of buying your seats separately
* Get priority booking
* Guarantee you are not disappointed if a concert is sold out
See Booking form and information for more details.

CAPRICORN

THE LION

Thursday 28 February, 8.00 p.m.

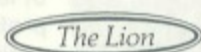
Large chamber group including wind/string/piano - with the internationally renowned soprano, Rosemary Hardy

Capricorn is in the forefront of British music ensembles known for its lively performances and wide-ranging repertoire.

PROKOFIEV
Overture on Jewish Themes
SCHNITKE
String Trio
STRAVINSKY
Septet (1953)
GUBAIDULINA
Homage to T.S. Eliot
(based on the Four Quartets)
Winner of the 1989 International Record Award

This tour is a major opportunity to experience musical developments in Soviet Russia, contrasted with established classics from the same country.

Pre-concert talk: 7.00 p.m. with the eminent composer Sofia Gubaidulina



ALLEGRI STRING QUARTET

THE LION

Wednesday 6 March, 7.30 p.m.

The Beethoven Quartets: I

See separate panel

Op 18 No 2 in G major • Op 74 in E flat major • Op 132 in A minor

OPERA RESTOR'D

OAKENGATES TOWN HALL

Wednesday 13 March, 7.30 p.m.

Early music singers with the Parley of Instruments, directed from the harpsichord by Peter Holman

Such is the case with Pergolesi's famous masterpiece 'The Servant Mistress' - the most famous Italian comic opera of the period, which is complemented by Dibdin's irresistible 'Ephesian Matron' - described by a critic as a meeting between J.C. Bach and Gilbert and Sullivan!

PERGOLESI La Serva Padrona (1769)
DIBDIN The Ephesian Matron (c1733)

Opera Restor'd is one of the most successful small-scale opera companies in this country, praised for its verve, immaculate musical presentation and dedication to bring audiences forgotten musical gems - fully staged.

See Box Offices
Tickets also at other prices available from:
Oakengates Town Hall & Agencies
Tel: Telford 619020

THE EARLY MUSIC NETWORK

In association/presented by



CANNON HILL PUPPET THEATRE

'Giants Witches and Fighting Men'

Adaptation of folk tales and songs of the Mabinogion by Dave Arthur

THE MUSIC HALL

Tuesday 19 March, 7.00 p.m.

1hr 30mins: suitable for children over six years.

Another superb tale of magic and adventure woven around the magical Celtic landscape and folklore.

'It should leave any impressionable child with lovely memories that will last a life time.' Guardian

School Shows:
Monday 18th & Tuesday 19th March

SEE WORKSHOPS



PORTLAND HOUSE NURSING HOME

FRIENDS OF THE SHROPSHIRE MUSIC TRUST
Friends' subscriptions and support make a major contribution to the Trust, and are vital for its continuing success. Please join us. In return you will receive a variety of benefits and privileges which include:

- * Advance Details of all events
- * Priority Booking
- * The Friends' Newsletter
- * Invitations to special events
- * Opportunities to meet the artists

Friends subscription: £5
To: Membership Secretary
Friends of the Shropshire MusicTrust
Freepost, Shrewsbury, SY5 6BR



JACQUES LOUSSIER TRIO

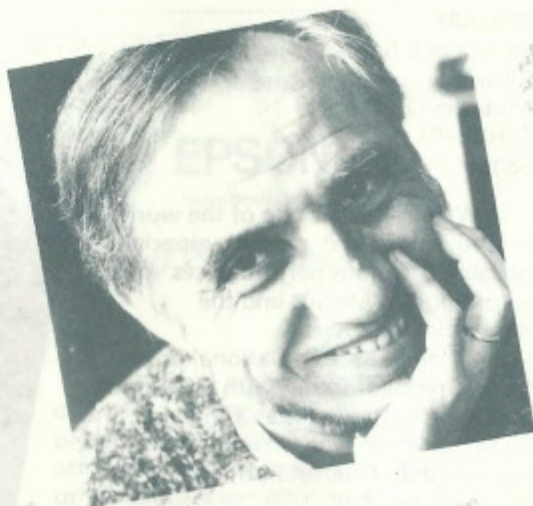
THE BUTTERMARKE

Wednesday 20 March, 7.30 p.m.

By popular demand, the return of this consummate artist with his reinterpretations of Bach - one of the great swingers in musical history. Loussier's sound expertly bridges the gap between the worlds of jazz and classical music and appeals to lovers of both.

In support of the Mayor's Charity Appeal - through the generosity of the artists

LB Lanyon Bowdler
SOLICITORS



ALLEGRI STRING QUARTET

THE LION

Wednesday 3 April, 7.30 p.m.

The Beethoven Quartets: II

See separate panel

Op 18 No 4 in C minor • Op 59 No 1 in F major • Op 127 in E flat major

NORTHERN CHAMBER ORCHESTRA OSIAN ELLIS - harp

ST. MARY'S CHURCH

Tuesday 9 April, 7.30 p.m.

PACHELBEL

Canon

DAMASE

Concertino for harp and strings

MAHLER

Adagietto (Symphony No 5)

OSIAN ELLIS (arr.)

Welsh Folk Song Suite for voice,
harp and orchestra

SAINT-SAENS

Fantaisie for harp and violin

MOZART

Divertimento in D major K251

One of the country's finest chamber orchestras makes a welcome return appearance, this time with the world-famous harp virtuoso, Osian Ellis - following recent acclaim for their Festival appearances and new recording.

The attractive programme of well-known favourites (- the Mahler was used as the 'Death in Venice' film theme music) and lesser-known delights, has been specially created to exploit St. Mary's rare acoustic. It offers an unusual opportunity to hear Osian Ellis as both harpist, and in his less well-known role - that of a first-class singer.



LB Lanyon Bowdler
SOLICITORS

Submitted for a Government Award
under the Business Sponsorship
Incentive Scheme

LUNCHTIME: ANDREW WHETTAM percussion

Yebudi Menubin's Live Music Now! Scheme

ST. MARY'S CHURCH

Friday 19 April, 1.00 - 2.00 p.m.

'Percussion calls the Tune'

Experience the world of percussion at first hand, with this young James Blades - regular solo recitalist and performer with the Halle, Royal Liverpool Philharmonic Orchestra and The Royal Shakespeare Company.

Coffee available

In support of Shrewsbury Music
Therapy Unit



ALLEGRI STRING QUARTET

THE LION

Wednesday 24 April, 7.30 p.m.

The Beethoven Quartets: III

See separate panel

Op 18 No 6 in B flat major • Op 59 No 3 in C major • Op 130 in B flat major

ALLEGRI STRING QUARTET

THE LION

Wednesday 8 May, 7.30 p.m.

The Beethoven Quartets: IV

See separate panel

Op 18 No 3 in D major • Op 59 No 2 in E minor • Op 135 in F major

ALBERNI STRING QUARTET

ST MARY'S CHURCH

HAYDN
 Quartet in D major Op 76 No5
 TIPPETT
 Quartet No 2 in F sharp
 MOZART
 Quartet in C major K465 ('Dissonance')

The weekend in residence by the Alberni is now a firm favourite of the season attracting ever increasing audiences and new, young concert goers.

This exceptional ensemble have a unique reputation for their educational work and will also give a string course at The Gateway, a family concert in North Shropshire and schools' concerts.

Saturday 25 May, 7.30 p.m.

"Spectacularly close to perfection"
 The Listener

SEE WORKSHOPS



RICHARD A. CLAY
 & Co. LTD.
 representing
 ALLIED
 DUNBAR

ALLEGRI STRING QUARTET

THE LION

Wednesday 29 May, 7.30 p.m.

The Beethoven Quartets: V
 Op 18 No 5 in A major • Op 95 in F minor • Op 131 in C sharp minor

See separate panel

ALLEGRI STRING QUARTET

THE LION

Wednesday 12 June, 7.30 p.m.

The Beethoven Quartets: VI
 Op 18 No 1 in F major • Op 130 in B flat major • Op 133 in B flat 'Grosse Fugue'

See separate panel

THE COMPLETE BEETHOVEN QUARTETS ALLEGRI STRING QUARTET

Mar 6, Apr 3, Apr 24, May 8, May 29, June 12
 (See individual entries for Programmes)

THE ADAM BALLROOM, The Lion Wednesdays - 7.30 p.m.

For over thirty-five years the Allegri have been delighting vast audiences with their concerts, recordings, television and radio performances. They are one of Great Britain's most popular and enduring quartets. In 1991 Shropshire has the rare chance to hear Beethoven's complete works for string quartet - the most profound and beautiful exploration of man's spiritual state. Each concert includes quartets from the different periods of Beethoven's life, providing a balanced evening of music that will appeal both to strangers to this repertoire as well as experienced music lovers.

Open Rehearsals: The Quartet will be rehearsing from 5.00 - 6.00p.m. and anyone is welcome to listen.

 British Rail



Friends of the
 SHROPSHIRE
 MUSIC
 TRUST

LIVE MUSIC NOW!

SERIES  SERIES
 C·E·N·T·R·E·

1990/91 sees a year since the opening of the Charles Darwin Centre, Shrewsbury. To celebrate its first birthday, the Centre is sponsoring a Charles Darwin Centre Series of events both in the Centre and the town, as part of the seventh Shropshire Music Season. All the artists are talented young performers from Yehudi Menuhin's Live Music Now! Scheme

Sat 27 Oct Darwin Centre FREE PERFORMANCE
 between 11.00 a.m. & 3.00 p.m.

Fri 29 Mar Darwin Centre FREE PERFORMANCE
 between 11.00 a.m. & 3.00 p.m.

Wed 19 Dec Darwin Centre FREE PERFORMANCE
 between 7.00p.m. & 9.00 p.m.

Fri 19 Apr Andrew Whettam
 St. Mary's 1.00 - 2.00 p.m. percussion

Tues 12 Feb Mary Ann Kennedy
 Bear Steps 1.00 - 2.00 p.m. clarsach

The visits also include work with schools and the disadvantaged.

WORKSHOPS

* Sat 13 - Sun 14 Oct
 JAVIER ALVAREZ/IAN DEARDEN
 Shrewsbury School
 An introduction to the World of Electro-Acoustic Music - including sound processing, performance, composition, synthesis and sampling.
 No experience needed - just a willingness to listen and explore sound!
 + Schools Workshops: Thursday 11 & Friday 12 Oct

+ Mon 18 & Tues 19 Mar
 CANNON HILL PUPPET THEATRE
 Music Hall
 Schools Shows: 7-11 yrs 'Giants Witches and Fighting Men'

* Fri 19 - Sat 20 Oct
 HILLIARD ENSEMBLE
 The Gateway
 Workshops for Small Ensemble Singing - reflecting the Old and New - including madrigals by Byrd, Morley, Wilbye and sacred works by Byrd and Arvo Part.

* Fri 24 - Sun 26 May
 ALBERNI STRING QUARTET
 The Gateway
 Weekend Course for Chamber Groups - a popular annual event.
 + Schools Workshops: Friday 23 May

* Fri 28 - Sat 29 June
 THE CRAFT OF CHORAL SINGING with Michael Proctor: Director of Benslow Music Trust, distinguished choral director and author.
 Another intensive Course for Choral Singers and Conductors who are interested in improving their skills and enjoyment.

Further details and application forms from:

* Shropshire Community Education Service The Gateway, Chester Street, Shrewsbury SY1 1NB Tel: (0743) 55159
 + Shropshire Music Trust Freepost, Shropshire SY5 6BR Tel: (095289) 375

Schools and the Community

The Live Music Now! musicians and many of the other artists can also offer Performances and Workshops in schools and community venues. Enquiries to Shropshire Music Trust.

Some funding help may be available via:

Arts Officer, Leisure Services, Shropshire County Council Tel: (0743) 232093 (Community)